

# Setting your web browsers preferred email handling method

Note: These capabilities vary between versions of web browsers. Increasingly developers are providing options for the use of web based email services, in addition to email applications that reside on your computer, but these options remain limited.

Due to the many differences with individual home computer configurations and service setups, the Hampton Township School District cannot effectively provide assistance with this on an individual basis.

**Microsoft Internet Explorer**

**Mozilla Firefox**

**Opera**

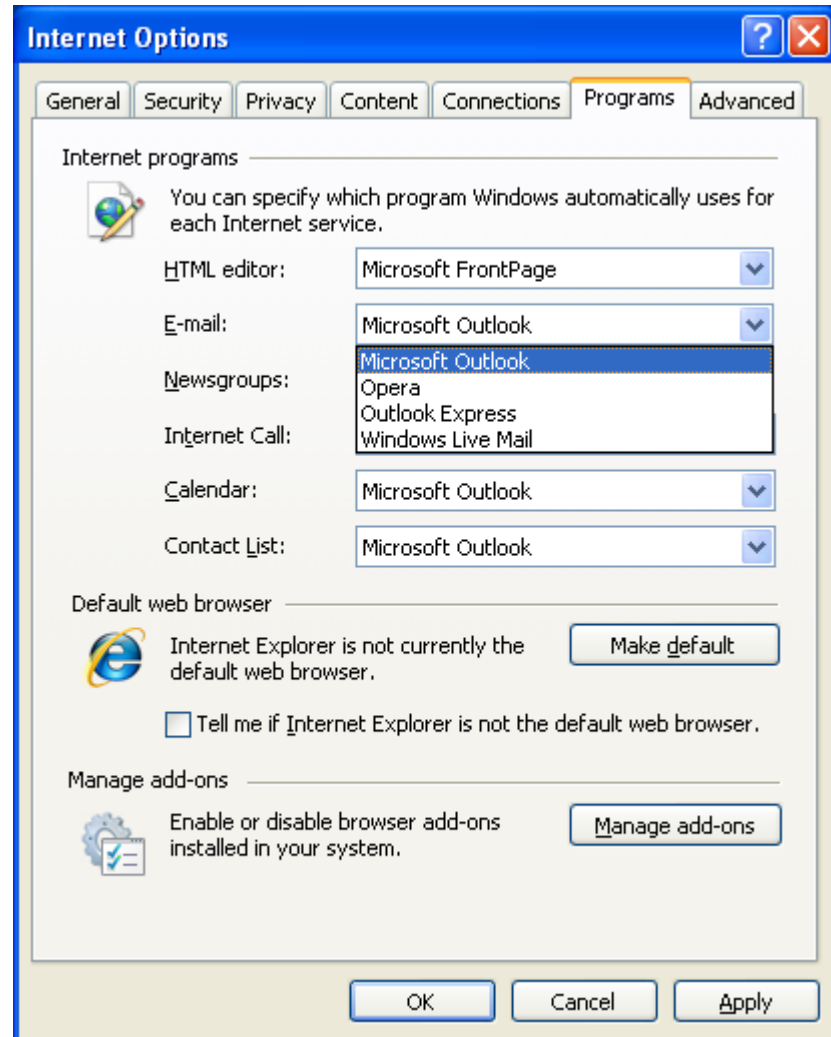
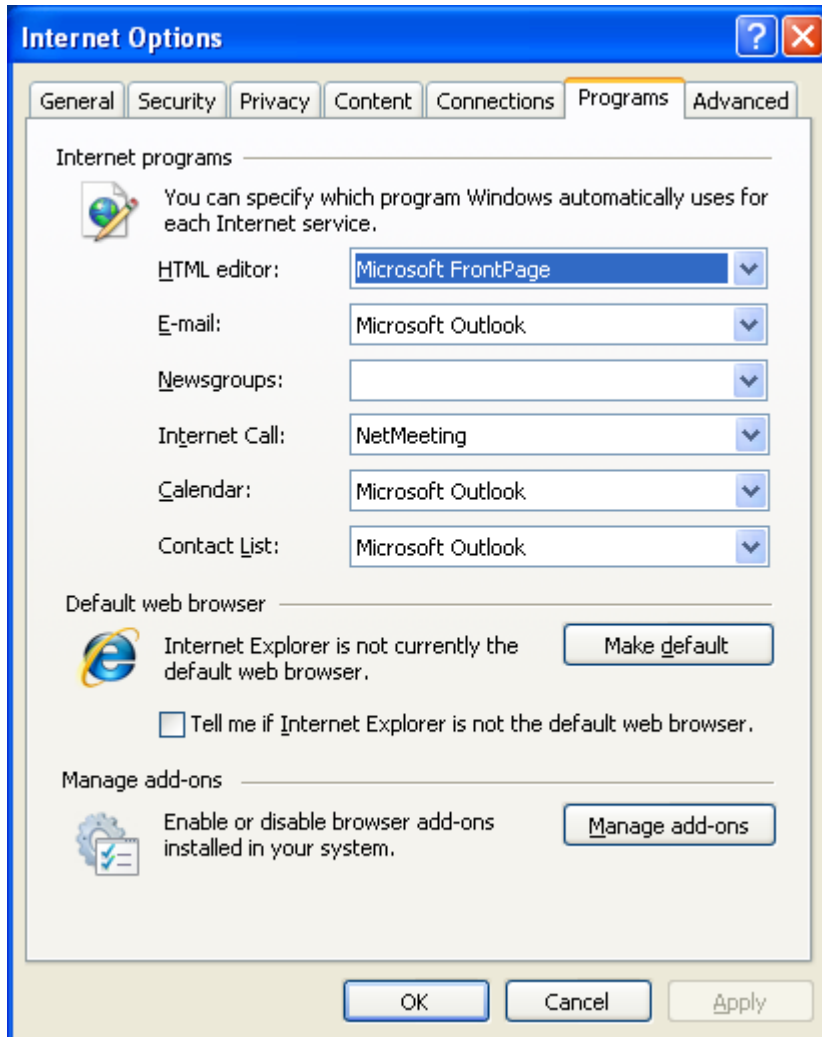
**Google Chrome**

**Apple Safari**

**Click the Browser Name for more information on its email handling options**

# Internet Explorer 7 and 8

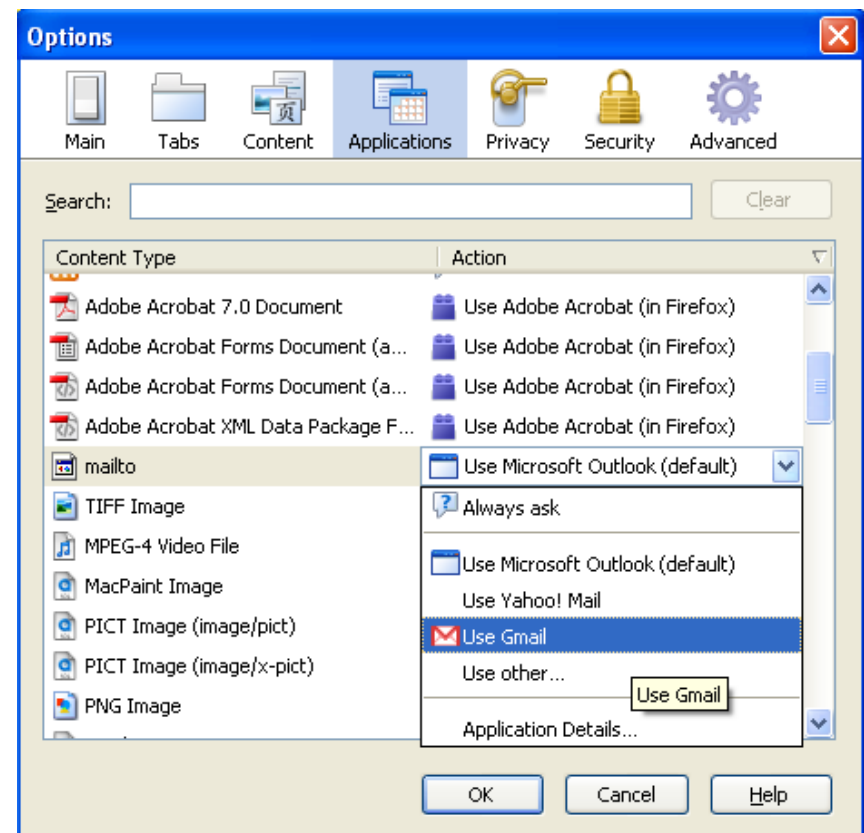
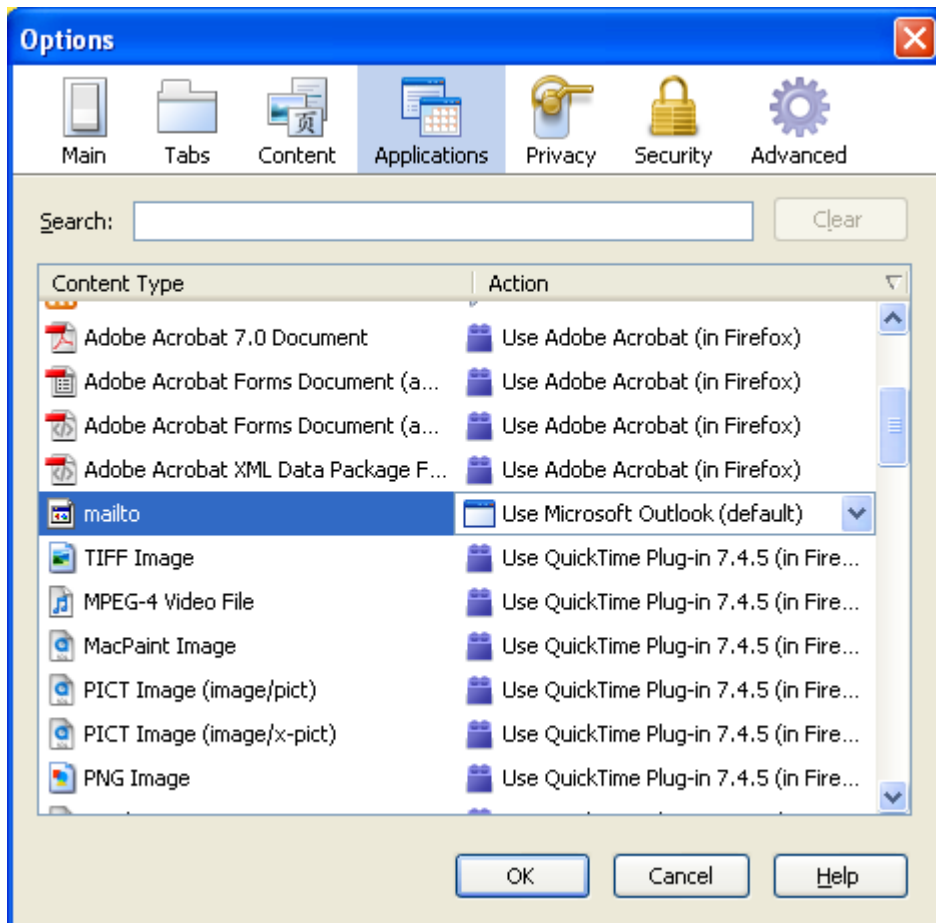
In the Internet Explorer 7 and 8 web browser, select **Options** from the **Tools** menu. Then click the **Programs** tab. To the right of **E-mail**: select your email program/service from the drop down list and click **Apply**.



**Back**

# Firefox 2 and 3

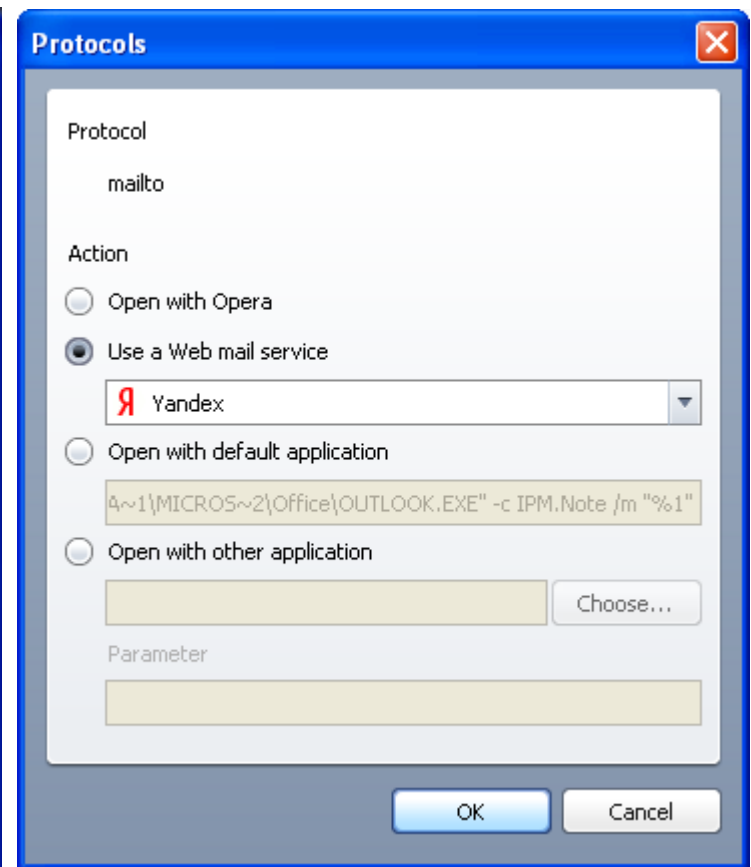
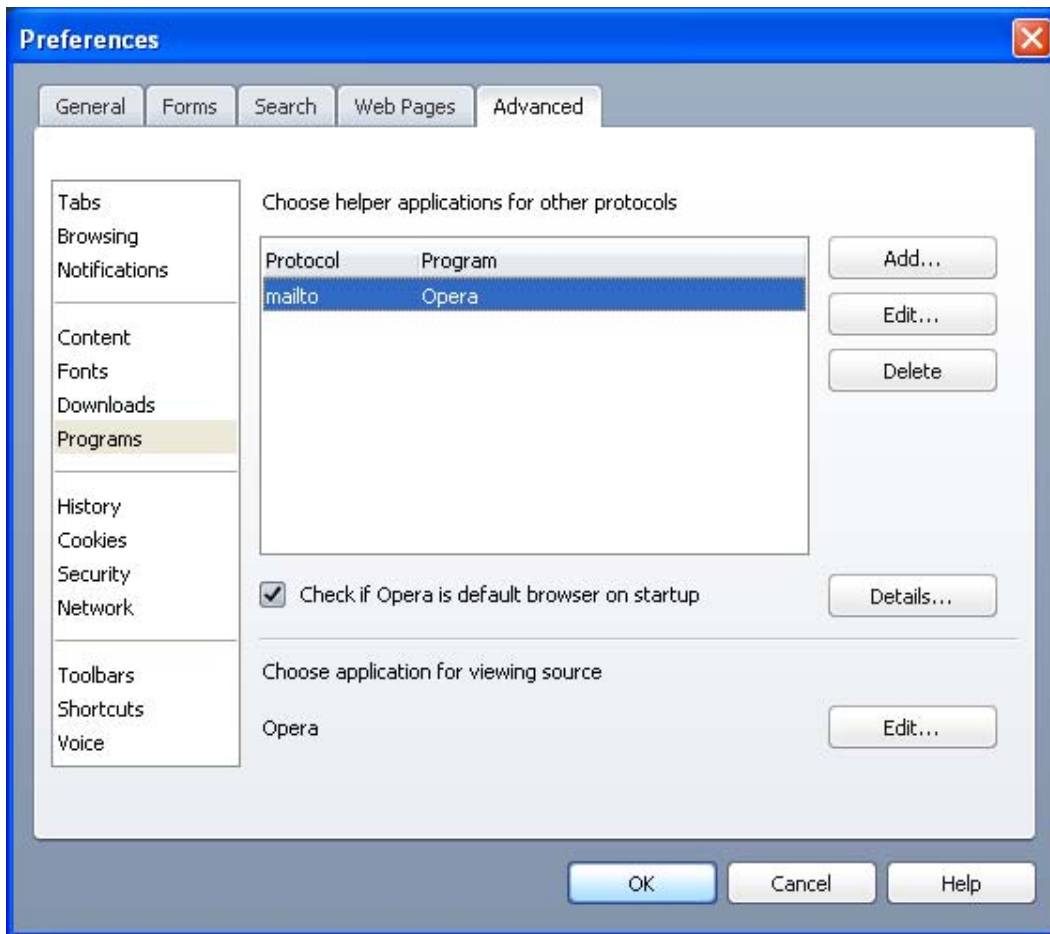
In the Firefox web browser, select **Options** from the **Tools** menu. Then click the **Applications** tab and scroll down to the **mailto** application. Then use the drop down menu to select your preferred email service or program and click **OK**.



[Back](#)

# Opera 10

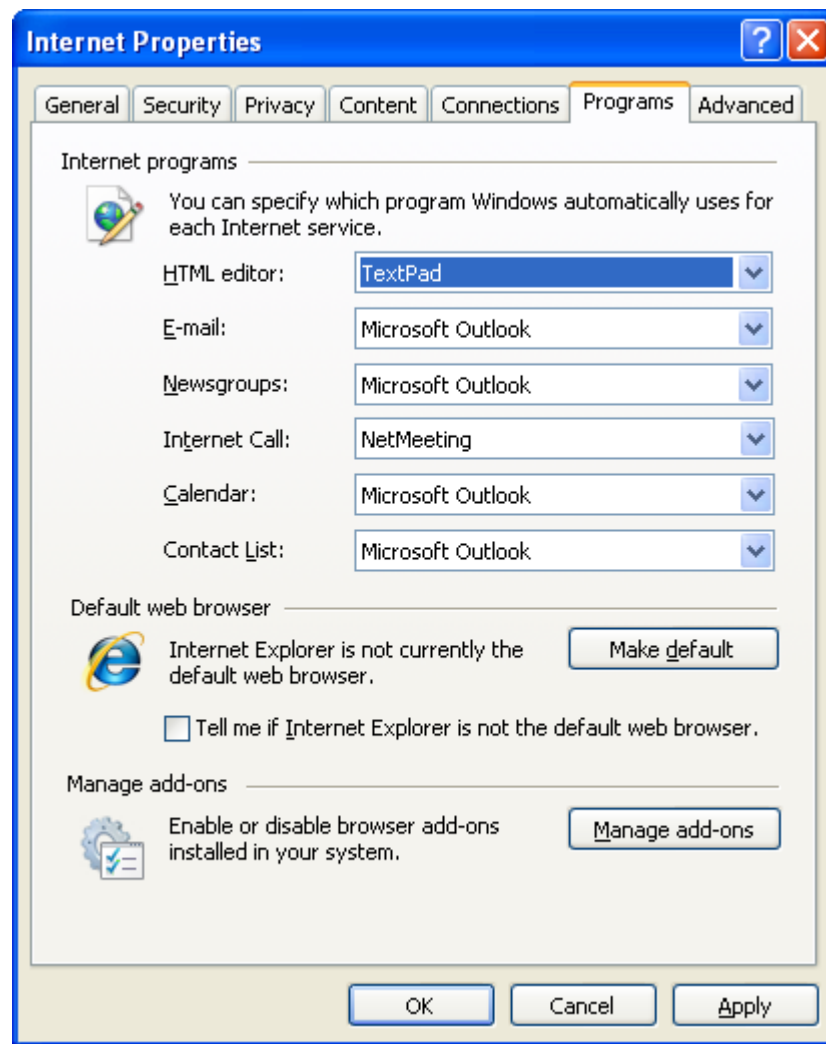
In the Opera 10 web browser, select **Preferences** from the **Tools** menu. Then click the **Advanced** tab and select **Programs**. Select the mailto Protocol and click the Edit... button. In the Protocol window, select from the available webmail services or choose another application.



[Back](#)

# Apple Safari and Google Chrome Web browsers

On Windows computers, these browsers appear to utilize your computers default email application as selected in the **Programs** tab of the **Internet Options** control panel.



[Back](#)